

# Business model

MOBILISING OUR RESOURCES

TO RESPOND TO CHALLENGES WHETHER CURRENT OR FUTURE

AND CREATING SUSTAINABLE VALUE

60+ years of expertise



7,540 employees worldwide...



...driven by our values of excellence, connected teams and bold leadership...



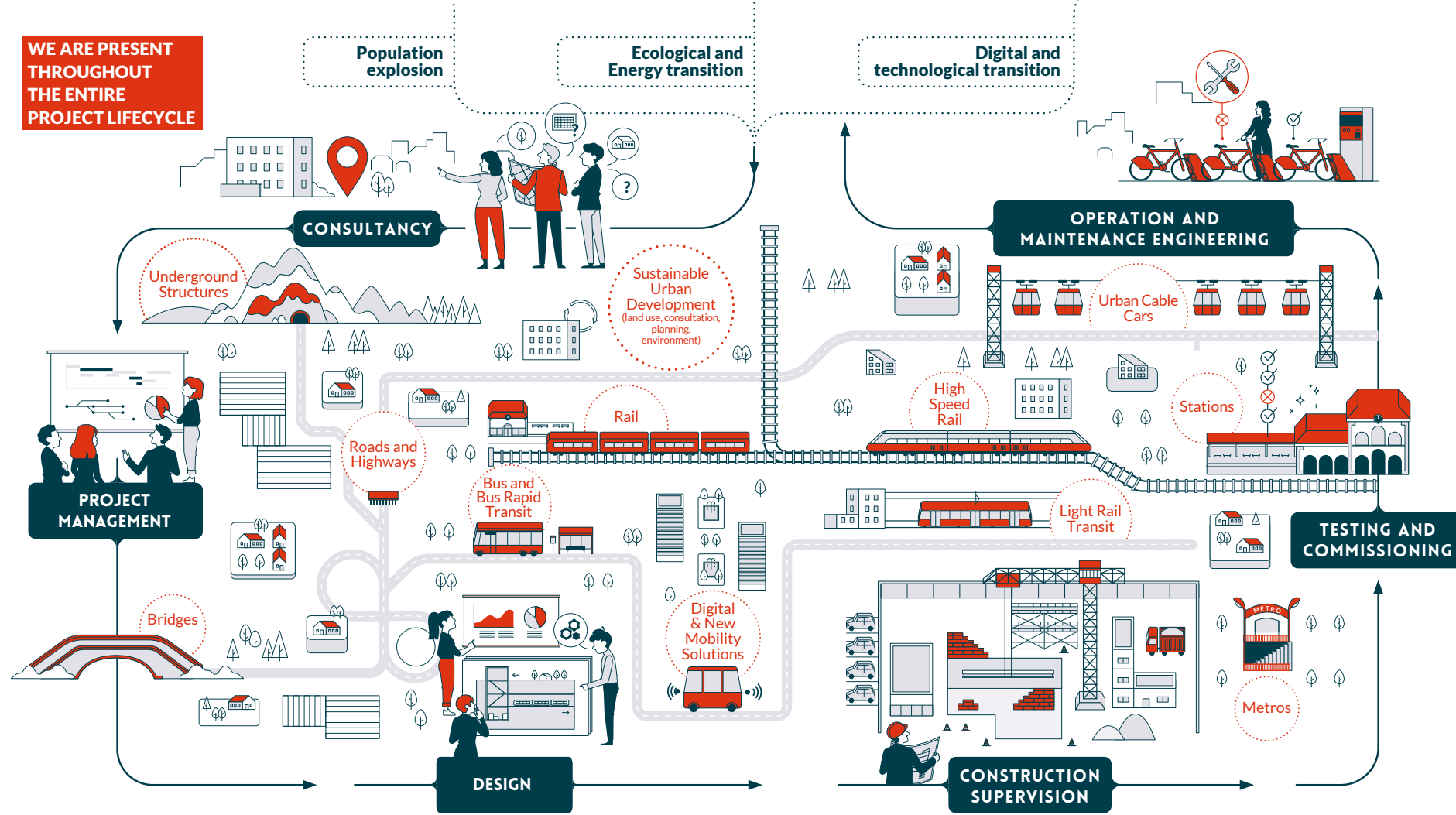
...connected through networks of expertise...



...operating in more than 80 countries...



...accompanied by industrial, academic, and research partners



OUR ACTIVITIES ARE DRIVEN BY STRONG COMMITMENTS



Environment



Ethics



Health, Safety and Security

## FOR SOCIETY

Designing mobility solutions that are:

- Sustainable to fight global warming and preserve the planet's resources
- Inclusive to offer everyone the freedom to get around for a better life

## FOR OUR CLIENTS

Developing more efficient transport and new mobility services:

- Delivering sustainable responses for their needs and those of their users
- Delivering new responses to society's challenges by leveraging ecodesign and digital

## FOR OUR EMPLOYEES

Building a relationship of trust and guaranteeing an appealing working environment based on the passion for our professions and collaboration

## FOR OUR SHAREHOLDERS

Developing SYSTRA's activity through sustained and sustainable growth

OUR ACTIONS CONTRIBUTE TO THE UNITED NATIONS' SUSTAINABLE DEVELOPMENT GOALS

