

CREATING SUSTAINABLE VALUE

MOBILISING OUR RESOURCES

TO RESPOND TO CHALLENGES

WHETHER CURRENT OR FUTURE

AND CREATE SUSTAINABLE VALUE

60+ years of expertise



7,336 employees worldwide...



...driven by our values of excellence, connected teams and bold leadership...



...connected through networks of expertise...



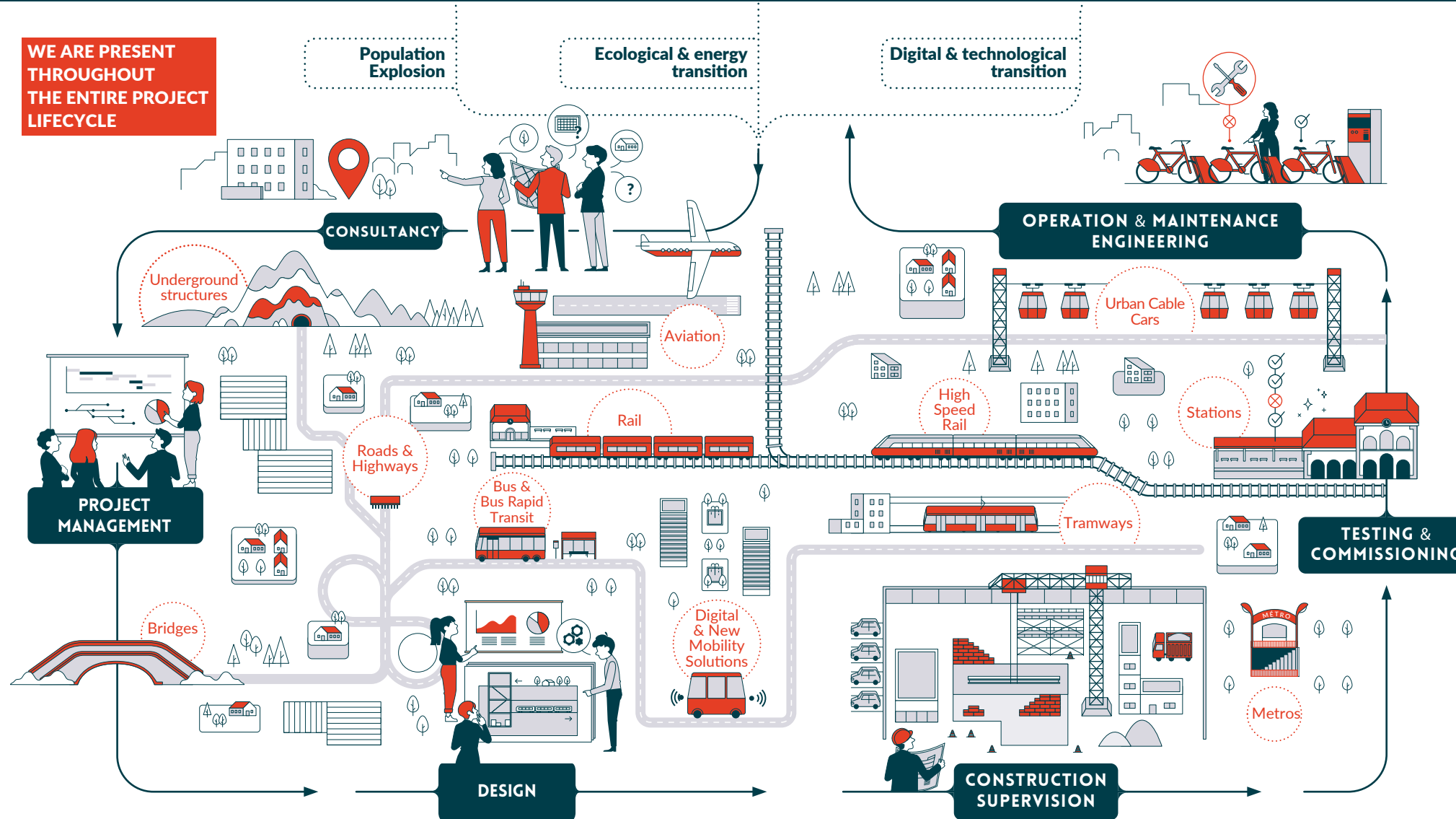
...operating in more than 80 countries...



...accompanied by industrial, academic, and research partners...



...supported by a turnover of €631m in 2019



WE ARE PRESENT THROUGHOUT THE ENTIRE PROJECT LIFECYCLE

OUR ACTIVITIES ARE DRIVEN BY STRONG COMMITMENTS



Environment



Ethics



Health, Safety & Security

FOR SOCIETY

Designing mobility solutions that are:

- Sustainable to fight global warming and conserve the planet's resources
- Inclusive to offer everyone the freedom to get around for a better life

FOR OUR CLIENTS

Developing more efficient transport and new mobility services:

- Delivering sustainable responses for their needs and those of their users
- Delivering new responses to society's challenges by leveraging ecodesign and digital

FOR OUR EMPLOYEES

Building a relationship of trust and guaranteeing an appealing work environment, based on the passion for our professions and collaboration

FOR OUR SHAREHOLDERS

Developing SYSTRA's activity through sustained and sustainable growth