

ACTIVE TRAVEL

SYSTRA



ACTIVE TRAVEL

At SYSTRA we are passionate about developing transport solutions that enhance places and the quality of people's lives. Our transport planners, engineers and urban designers work on a diverse portfolio of transport planning and engineering projects that have active travel, decarbonisation, and place-making at their heart.

Our approach is to understand the 'place' as well as all the issues around 'movement' and to think imaginatively about how the two can work together, enabling transport investment to contribute positively to the broader experience and quality of life for all.

We work for public and private sector clients at all project scales.

We consider all modes of movement, and how these can be accommodated whilst enhancing the 'place'.





We recognise
the importance of
working collaboratively
with our clients, other
design professionals,
stakeholders and the
public



ACTIVE TRAVEL DELIVERY

SYSTRA has delivered a wide range of active travel-related projects, from high-level strategies outlining 'quick wins' for planned active travel corridors and healthy routes, through to detailed design of routes and post-implementation monitoring. Throughout this work, we ensure a joined-up approach, considering impacts on the pedestrian experience alongside the cyclists, the road network and the general urban realm, conducting research into best practice, as well as working with stakeholders to understand mode-shift potential and assisting the public in making the transition out of their cars.

SYSTRA's teams have delivered projects across the UK and Ireland to transform the user experience, delivering safer, more enjoyable active travel-based schemes that have shifted people out of their cars to create lively neighbourhood centres, and links between key destinations and leisure routes. These have led to place-making, improved health outcomes and increased retail spend for local businesses, whilst also preventing community severance.

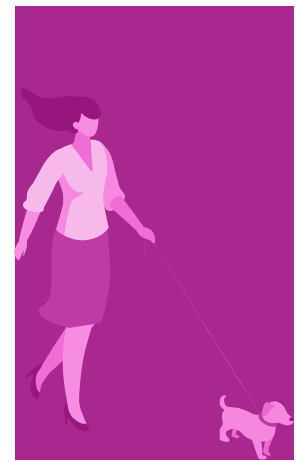
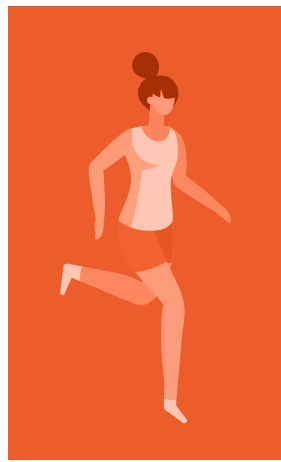
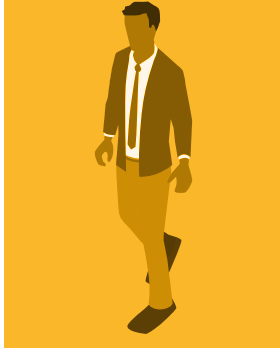
Accommodating all users and accessibility considerations are strongly supported in our approach to scheme delivery. We have specialists who consider Equality Impact Assessment (EqIA)-based requirements and cyclists with non-standard cycles are always considered within our work and the language we use.



OUR KEY



OFFERS



Strategy

Data-driven studies (including cycle hire, cycle parking and Local Cycling and Walking Infrastructure Plans (LCWIPs), considering EqlA requirements, accessibility issues and requirements for non-standard cycles. SYSTRA has led multiple strategies, written in plain English, reaching a wide, non-technical audience, and having a direct impact in unlocking funding and political buy-in. Our active travel business case work, including detailed understand of Active Mode Appraisal Toolkit (AMAT) has supported many successful funding bids.

Network Design Criteria Specification

Background analysis supporting active travel route development and high-level optioneering and appraisal, delivering to LTN 1/20-based requirements and utilising international best practice in our work. SYSTRA has worked across a variety of geographic areas, from healthy routes with London boroughs to schemes covering whole towns.

Preliminary and Detailed Design Work

Design of active travel schemes and accompanying infrastructure at all stages of project lifespan. Our teams have worked on active travel schemes at all scales, from small-scale and localised interventions, to corridor studies, and area-wide LCWIPs and Local Plan support work, including Infrastructure Delivery Plans and design work to support modelling.

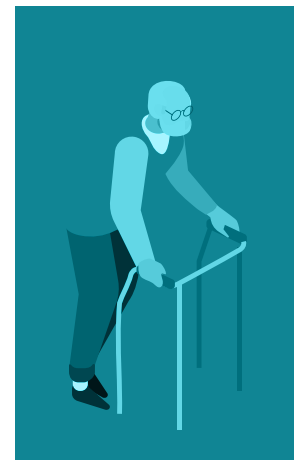
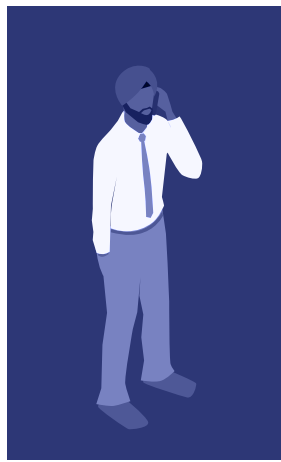
School Streets

SYSTRA has worked with a large number of schools to plan, consult on and deliver school street closures to provide children safer access to school, whilst reducing emissions in the area outside of the school gates. We have led the design of schemes and additionally, the monitoring and evaluation of schemes.

Low Traffic Neighbourhoods (LTNs)

In order to support the implementation of Low Traffic Neighbourhoods, SYSTRA has assisted with a wide range of services, including analysis of vehicle displacement, signage and urban design, consultation, scheme evaluation and monitoring. Our teams have also designed infographics to help tell the story to the local community.





Behaviour Change

Engaging with businesses, schools, residents and government organisations to encourage active travel. SYSTRA has a long history of delivering successful behaviour change campaigns, including personalised travel planning, marcomms, challenges and travel planning. SYSTRA has also worked on 'social prescribing', forging links with our colleagues in public health.

Travel Demand Management (TDM)

SYSTRA has delivered TDM measures for a variety of agencies including national and international, single and multiple-date events. We have also delivered TDM associated with major construction sites, considering site and event-based traffic and background demand.

Stakeholder Consultation, Engagement and Research

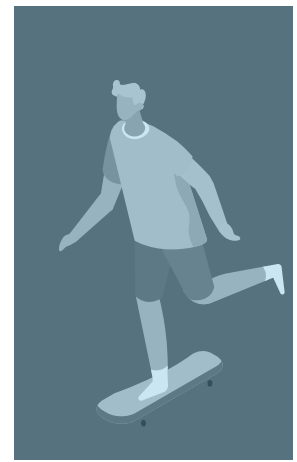
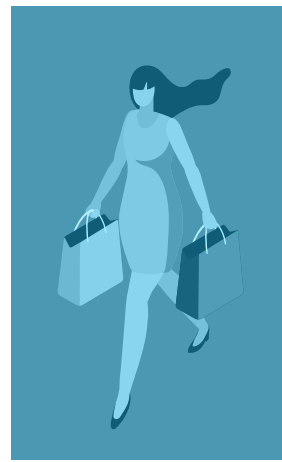
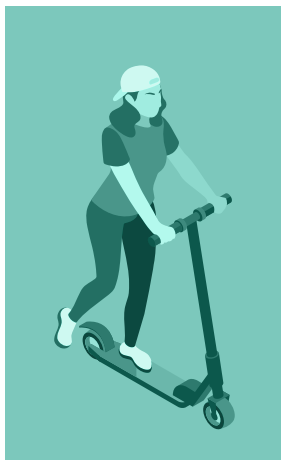
Undertaking consultation and engagement on active travel infrastructure and policies, as well as understanding local sentiments towards this infrastructure and its impact on local surroundings. Our teams have developed tools, including for sentiment analysis of open question responses and robust processes for de-duplication, where surveys are at risk of manipulation.

Co-creation/ Co-design

SYSTRA has been utilising such techniques for a number of years and has built, and successfully used, a process built around the Design Council's Double Diamond. This work brings people on the journey with you, helping better define the requirements of Streets for All.

Pedestrian Environment Review System (PERS)

PERS audits conducted by SYSTRA staff have allowed local authorities to understand challenges in the connectivity and quality in their footways, with follow up work allowing the prioritisation and design of improvement schemes.



Public Realm Design and Implementation

SYSTRA has delivered design work to provide permeable public spaces, including station concourses and nearby open spaces, university campuses and town centres. Our teams deploy greening, public art and tactical urbanism within our schemes.

Kerbside Strategy Planning

Following the delivery of multiple on and off-street parking based projects, SYSTRA has evolved this offering to support the change in demand for use of the kerbside; developing strategies to support the reallocation of road space, considering micro-mobility, parklets, cycle hangars, cycle hire, e-scooters, car clubs, delivery and servicing requirements, and much more.

Cycle Trip Modelling

Spreadsheet-based work and tools such as CYNEMON to perform demand/routing analysis for cycle trips. We have experience adapting core models to provide information on the impact of attitudes to cycling previously not captured in traditional four-stage transport models to assess the levels of cycling, route choice and impact on other modes for a range of cycling schemes and strategies.

Pedestrian Modelling

Using a range of pedestrian modelling software packages such as LEGION and VisWalk, SYSTRA has experience assessing station concourse redesigns, stadium access and egress during special events, and airport security-line arrangements to understand pedestrian flow implications.

Monitoring and Evaluation

Using a range of techniques to capture monitoring data, both quantitative and qualitative. SYSTRA utilises our Process Automation & Data Science (PADS) team to automate manual tasks, saving time and removing error risks from manual-based tasks. We have built tools to automate the handling of traffic survey data, public-facing dashboards and normalisation techniques to ensure our data is valid when considering data trends.





Find out how SYSTRA can assist you in Active Travel:

DAVID ALDERSON

Director

t: +44 203 882 1615

m: +44 7870 401581

e: dalderson@systra.com

WWW.SYSTRA.COM/UK/

Whilst every care has been taken to ensure that the information contained in this publication is accurate, neither SYSTRA Limited makes no representations, warranties or guarantees with respect to the content, nor accepts responsibility or liability for errors or for information which is found to be misleading. This publication is not intended to amount to advice on which you should rely and you must obtain professional or specialist advice before taking, or refraining from, any action on the basis of the content of this publication.



Copyright 2024 SYSTRA Limited. SYSTRA Limited is registered in England under number 03383212
Registered office: 3rd Floor, 1 Carey Lane, London, England EC2V 8AE. Tel: +44 20 3855 0079