

## **SYSTRA Arabia celebrates inauguration of historic Riyadh Metro network alongside the Royal Commission for Riyadh City (RCRC) and other partners**



**The record-breaking project is the world's largest single-phase metro system, set to transform daily life for millions.**

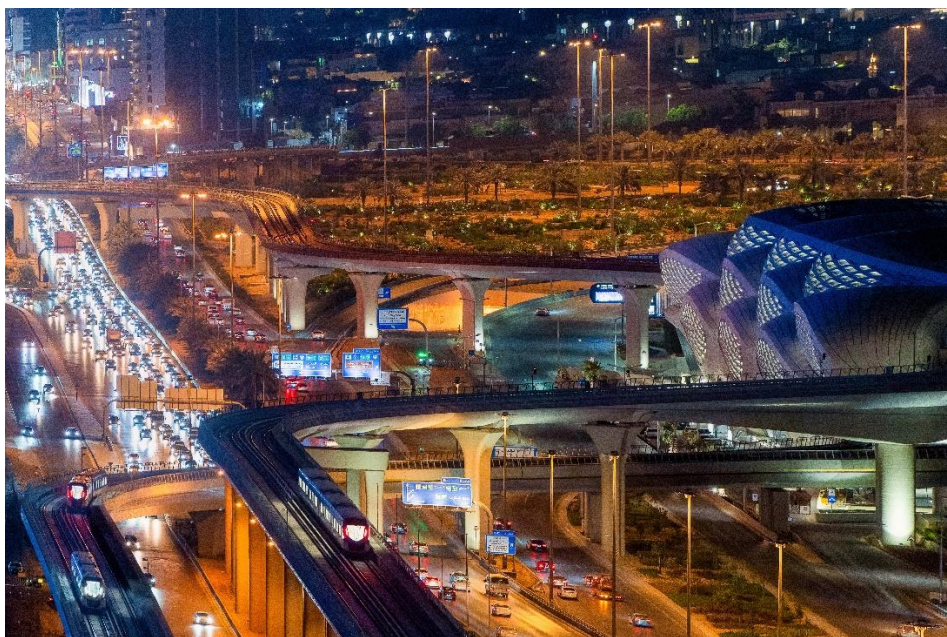
Riyadh, Saudi Arabia: On November 27th, SYSTRA Arabia, along with its JV partners Egis and Parsons (RMTC) and the Royal Commission for Riyadh City (RCRC), celebrated a monumental achievement with the inauguration of the landmark Riyadh Metro project in Saudi Arabia's capital city. With the first 3 lines commencing passenger operations December 1st, the fully automated network will transform daily life for millions. The opening of the Blue, Yellow and Purple lines (Lines 1, 4 and 6) marks the first major triumph in the decade-plus effort to revamp the transport structure in the capital, with the remaining lines scheduled for phased commencement of passenger operations over the coming weeks

SYSTRA Arabia, along with its partners, were appointed in 2012 as the Project Management and Construction Management (PMCM) consultants for the Blue, Red and Orange lines (Lines 1, 2 and 3), overseeing design and build alongside contractors Bechtel, Almajani, Consolidated Contractors Company and Siemens (BACS, Lines 1 and 2) and Webuild, Hitachi, Alstom, Larsen & Toubro and Nesma (Line 3).

The SYSTRA Arabia team played a crucial role in resource planning, design, project management and monitoring, risk assessment, and safety and environmental compliance, drawing heavily on the Group's industry-leading expertise in transport projects globally. With

176 kilometres of track and 85 stations, 7 depots, 19 Park-N-Ride facilities and 5 operations control centres, the Riyadh metro project was a herculean act of coordination among a myriad of entities. For a sense of scale, the project required the removal of more than 16.8 million cubic meters of earthworks and, at its peak, had more than 28,000 tradespeople working onsite.

**Alexandre Busson**, SYSTRA Arabia Managing Director for Mobility and Railways, says: “A truly global effort, the Riyadh Metro project brought together more than 200 SYSTRA professionals from over 30 countries. In adhering to the highest international standards and prioritizing HSE, this iconic project led by the RCRC is setting a new benchmark for sustainable urban development.”



### **City life, transformed**

Riyadh is currently home to more than 7.8 million inhabitants, a number which is set to grow exponentially through 2030. In a city where car travel is by far the dominant form of transport, urban congestion has reached acute levels in recent years. Upon the opening of all six lines, the Riyadh Metro network will be capable of carrying an estimated 3.6 million daily passengers at maximum capacity, significantly easing the lives of commuters. The network is expected to eliminate the need for up to 4,100 lane-kilometres of roadway by 2030, which will dramatically decrease average commute times and prove transformative for the millions of residents who currently spend hours sitting in traffic each day.

### **A greener capital city**

From an emissions standpoint, the benefits are still greater: Over the next 30 years, the Riyadh Metro network is expected to reduce greenhouse gas emissions by up to 3105 tons

of volatile organic compounds (VOCs), 217 tons of particulate matter, 3990 tons of nitrogen oxides, and a whopping 12.5 million tons of carbon dioxide. This reduction will enhance quality of life across all age groups and communities, contributing to a greener, healthier capital city for the Kingdom.

### **SYSTRA Arabia's growing legacy in the Kingdom**

The inauguration of the Riyadh Metro is the latest in a long line of projects the company has undertaken in Saudi Arabia. SYSTRA has been active in the Kingdom since 1987, creating transport networks throughout the country – most notably in Riyadh, Jeddah, Medina and Mecca.

Having been involved in many major metro, rail freight, planning and transport consultancy projects in the region, SYSTRA Arabia is now fully mobilised to help meet the ambitions of Vision 2030 through additional projects such as:

- Qiddiya Light Rail System and Cable Car Transport Network
- King Abdullah Financial District Monorail
- Prince Faisal Bin Fahd Stadium, being developed in support of upcoming tournaments, including Asian Cup of Nations and FIFA World Cup
- Modon Industrial Cities
- Regeneration of Riyadh's historic city centre
- NEOM Oxagon
- NEOM Trojena
- AlUla Experiential Tramway
- Mashaaer Metro
- Mecca Metro
- Mecca Bus Rapid Transit System
- Al Madinah Bus Rapid Transit System

SYSTRA Arabia's ongoing contributions to these and other giga projects have made the company into a leading partner for Saudi authorities working to realise Vision 2030.

### **Conclusion**

The opening of the Riyadh Metro is a transformative moment for the Saudi capital, and its impact cannot be overstated. In such a fast-growing city, the arrival of alternative, energy-efficient transportation will give millions of inhabitants hours back in their days and reduce emissions, resulting in cleaner air for everyone. This project will stand as one of the SYSTRA Group's all-time triumphs, and SYSTRA Arabia is proud to have helped orchestrate this truly groundbreaking project.

SYSTRA Arabia CEO **Belal Deiranieh** says: “We at SYSTRA are incredibly proud to have delivered this world-class metro system alongside our partners and the Royal Commission for Riyadh City (RCRC). With the growing population in the capital city, the Riyadh Metro will undoubtedly bring greater efficiencies, reduce the carbon footprint, and boost economic growth for all residents. As passenger operations commence, a new connected future begins.”



#### About SYSTRA Arabia

Since 2003, SYSTRA has been supporting the Kingdom’s developments across Riyadh, Jeddah, Al Ula, Tabuk Province, Medina, and Mecca, and has been involved in many iconic and signature projects, including Riyadh Metro, NEOM, Qiddiya, King Abdallah Financial District, AlUla Experimental Tramway, Mashaaer Metro, North-South Railway, just to name a few.

Across continents, SYSTRA is present in 80 countries and 350 cities. Our global network of experts provides our clients with a consistent, high-quality standards and specialist technical skills, wherever they are in the world.

[systra.com](https://systra.com)  
[systra.com/arabia](https://systra.com/arabia)

#### Press contact:

Ashley Eldridge, communications manager

[aeldridge@systra.com](mailto:aeldridge@systra.com)

+966 (0)55 9913312